

Abstract geometric lines in the top left corner, consisting of several overlapping, irregular polygons and lines that create a sense of depth and movement.

CONTAINER HOME BUILDING

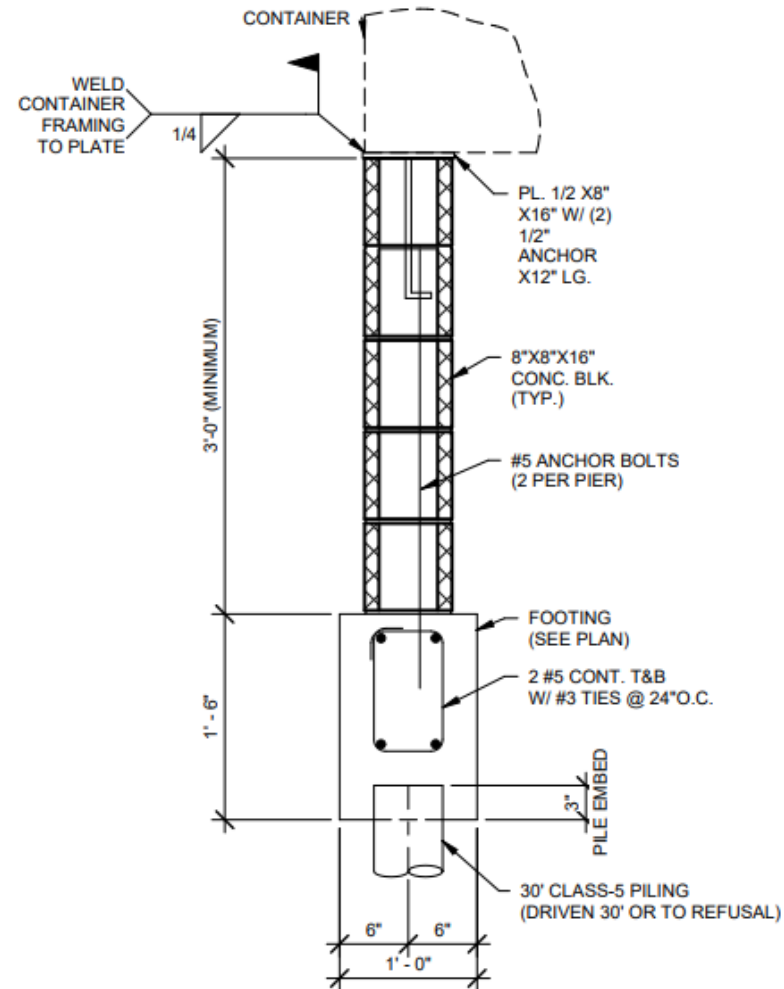
Elmo Vincent

Meaux Services

NOLA Container Development, LLC



FOUNDATION



TYPICAL CONTINUOUS FOOTING DETAIL

Scale: 1" = 1'-0"

FOUNDATION



FOUNDATION



FOUNDATION



PLACING CONTAINERS



PLACING CONTAINERS



PLACING CONTAINERS



PLACING CONTAINERS



PLACING CONTAINERS





PLACING CONTAINERS

FRAMING



@nolacontainerdevelopment

FRAMING



@NolaContainerDevelopment

FRAMING





FINISHING

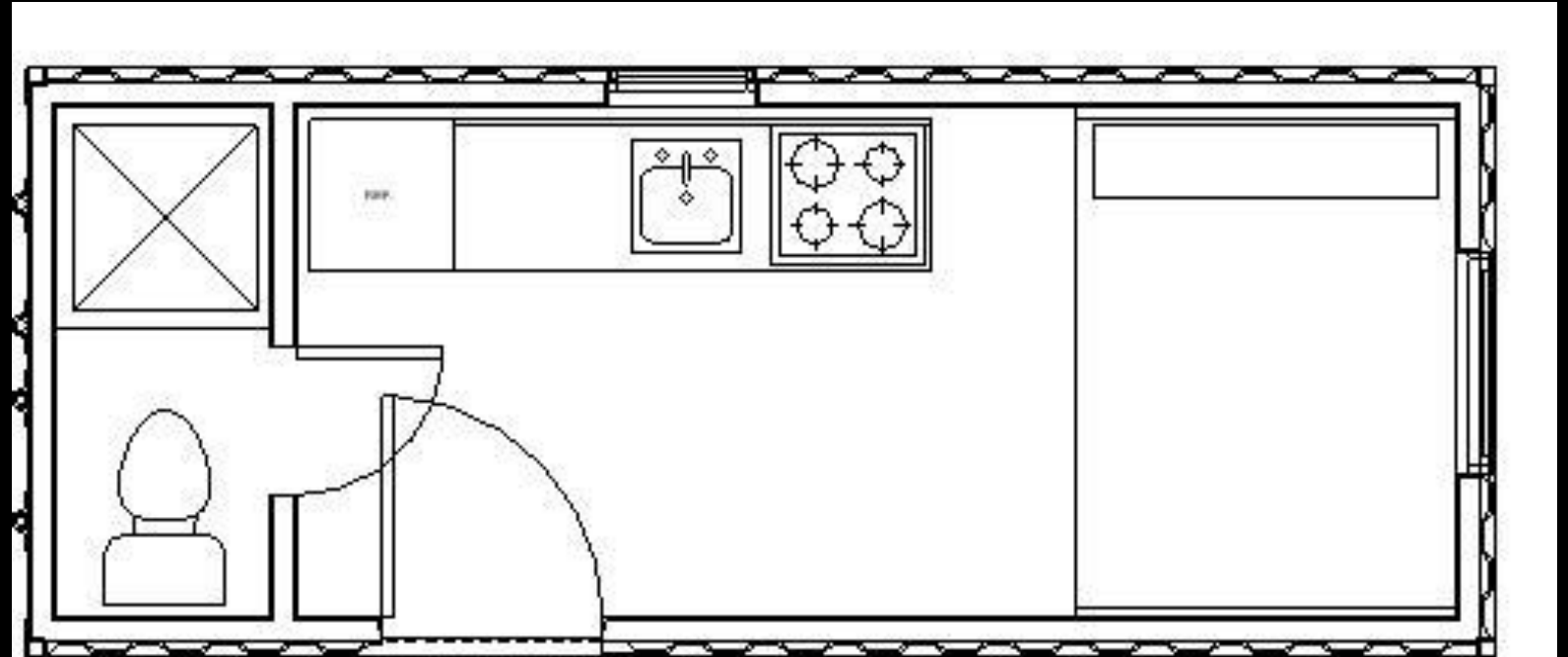


FINISHING



FINISHING

ONE (1) 8' X 20'
CONTAINER
160 SF LIVING
1 BEDROOM, 1 BATH
ROOF STICK FRAMED

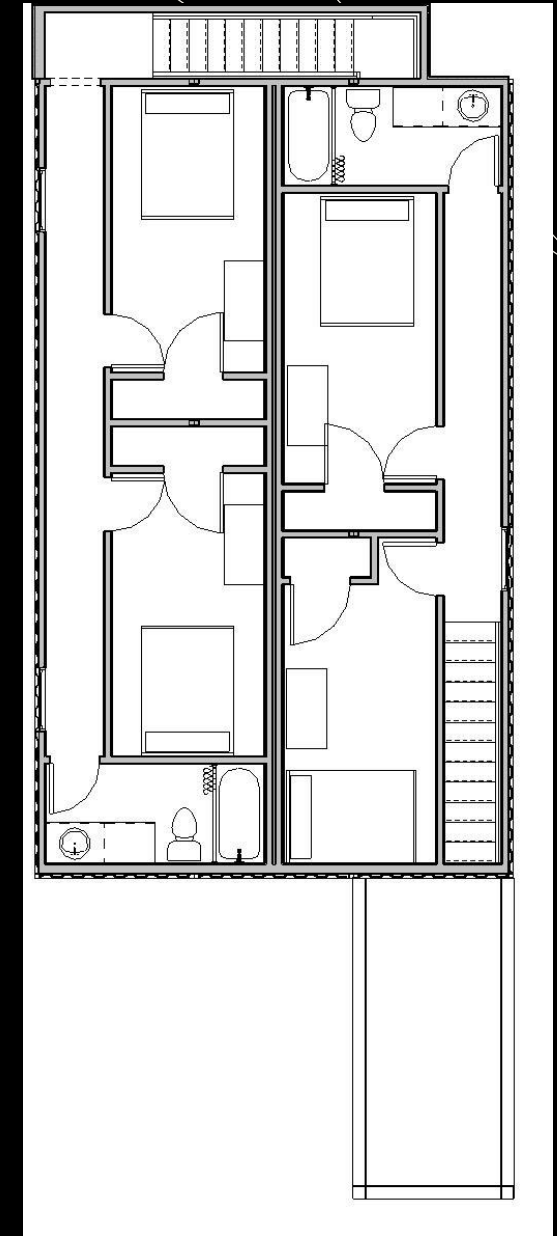
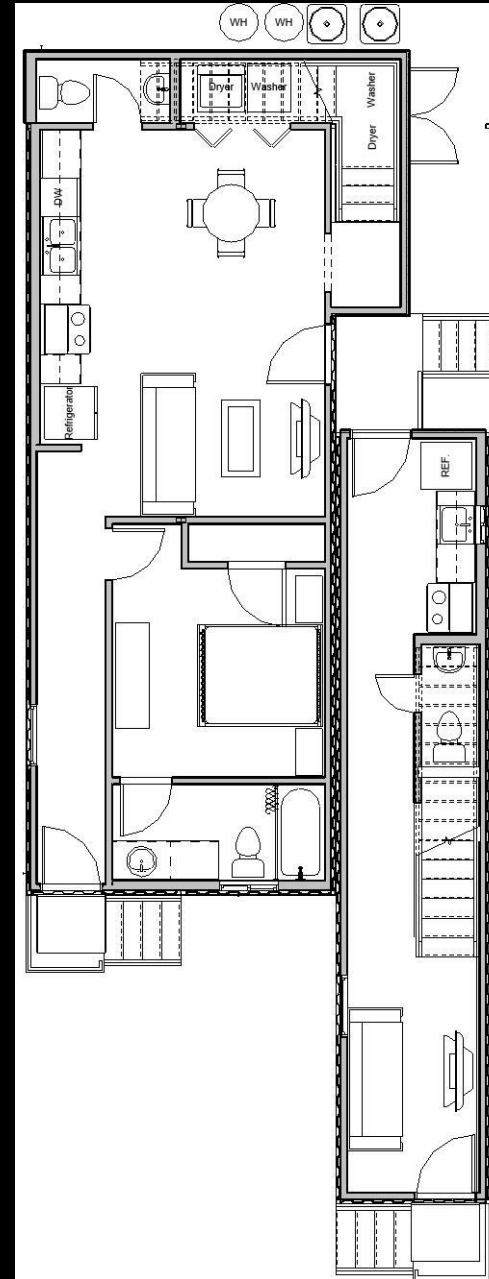


ONE (1) 20' X 20'
CONTAINER
160 SF LIVING
1 BEDROOM, 1
BATH
ROOF STICK
FRAMED



SIX (6) 8' X 40' CONTAINERS DUPLEX

UNIT A = 1,302 SF LIVING
3 BEDROOM, 2 ½ BATH
UNIT B = 798 SF LIVING
2 BEDROOM, 2 ½ BATH
BUILD OUT FOR STAIR
ROOF STICK FRAMED

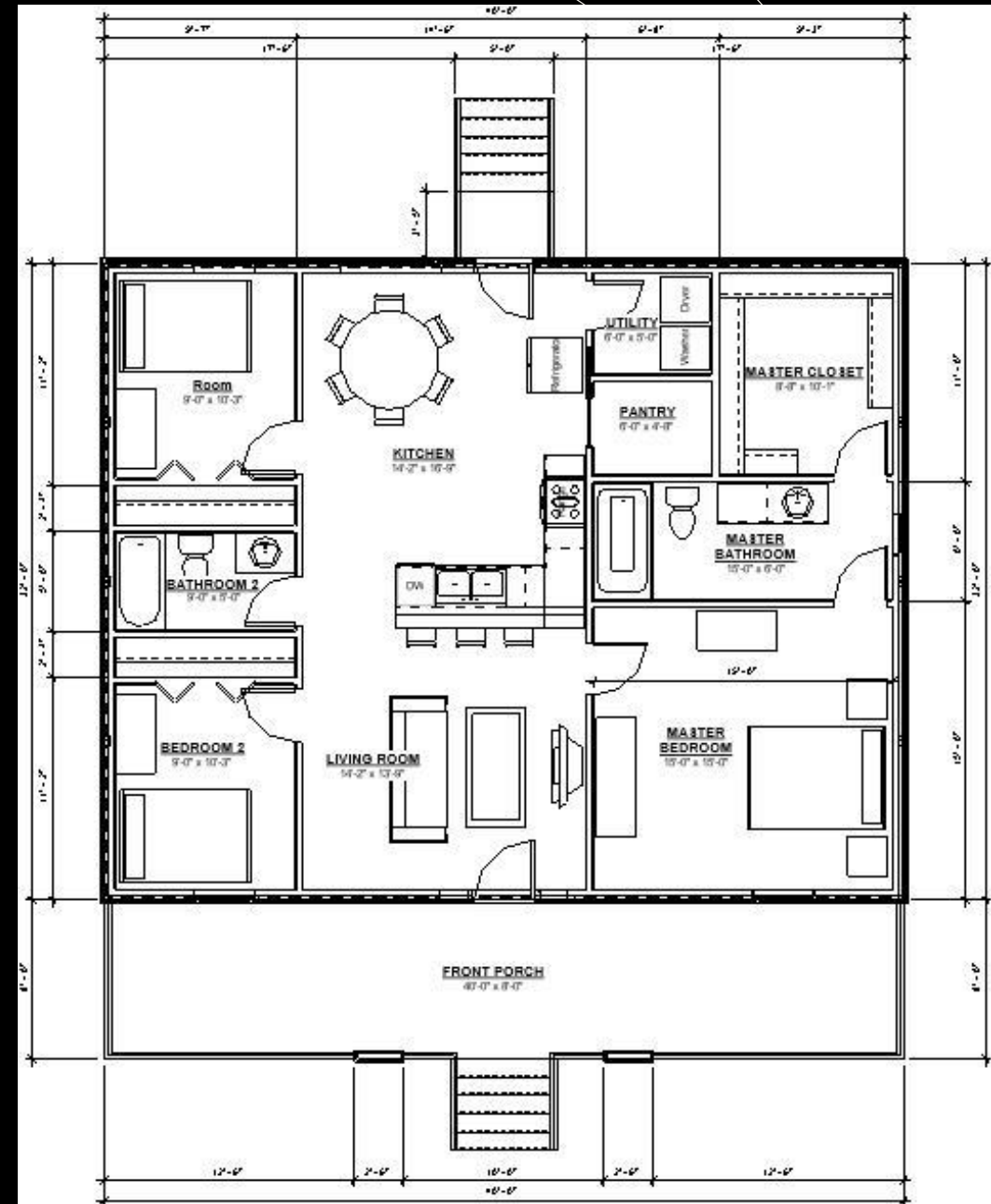


SIX (6) 8' X 40'
CONTAINERS
DUPLEX

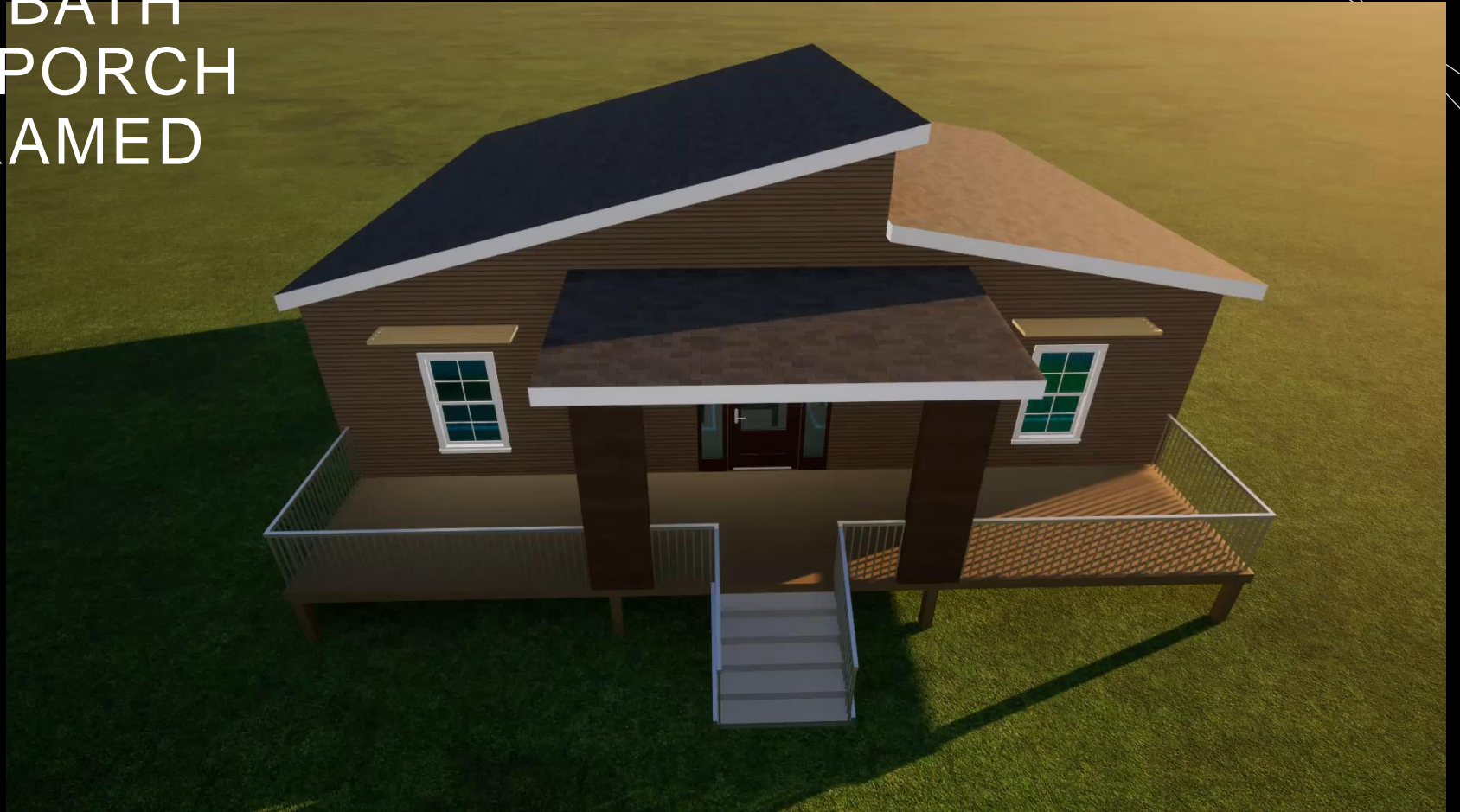
UNIT A = 1,302 SF LIVING
3 BEDROOM, 2 ½ BATH
UNIT B = 798 SF LIVING
2 BEDROOM, 2 ½ BATH
BUILD OUT FOR STAIR
ROOF STICK FRAMED



FOUR (4) 8' X 40'
CONTAINERS
1,280 SF LIVING + 340 SF
PORCH
3 BEDROOM, 2 BATH
BUILD OUT FOR PORCH
ROOF STICK FRAMED



FOUR (4) 8' X 40'
CONTAINERS
1,280 SF LIVING + 340 SF
PORCH
3 BEDROOM, 2 BATH
BUILD OUT FOR PORCH
ROOF STICK FRAMED



QUICK FACTS

FOUR (4) 8' X 40' CONTAINERS

2 STORY, 3 BEDROOM, 2 ½
BATHROOMS

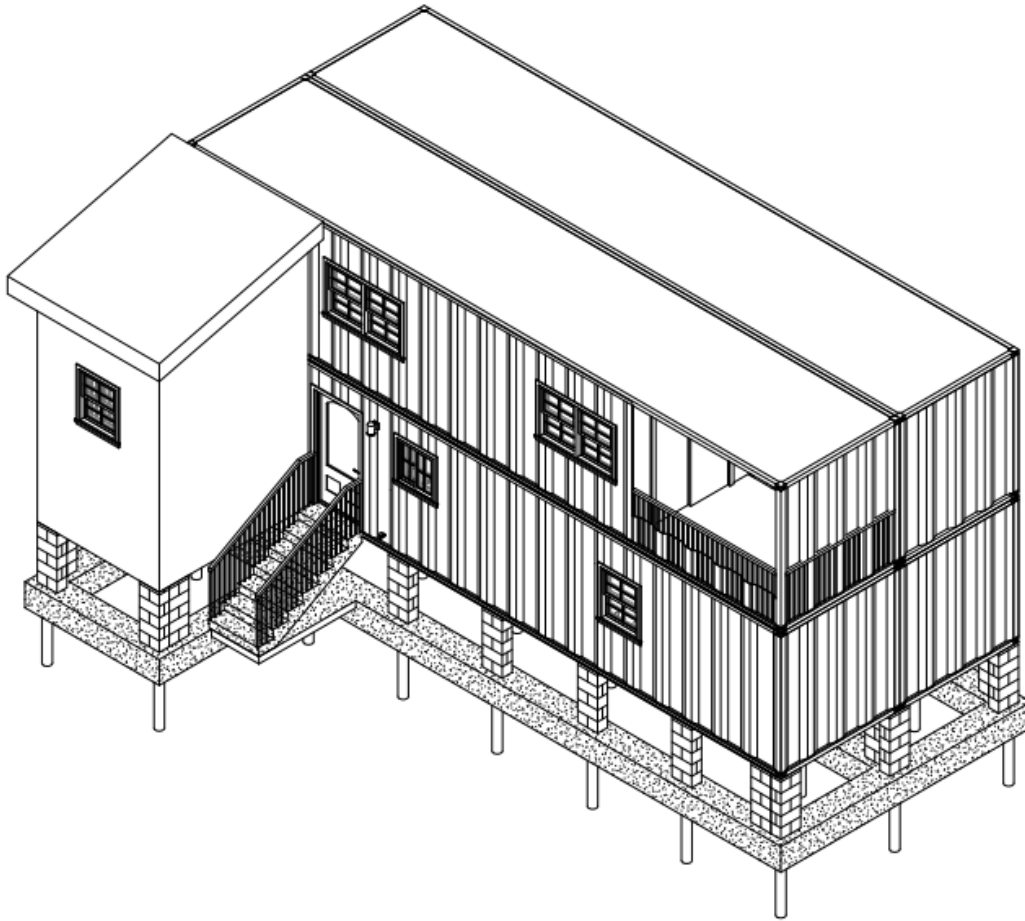
1,360 SF LIVING (1,445 SF TOTAL)

STAIR BUILD OUT

\$120K - \$130K (~\$89.97/SF)

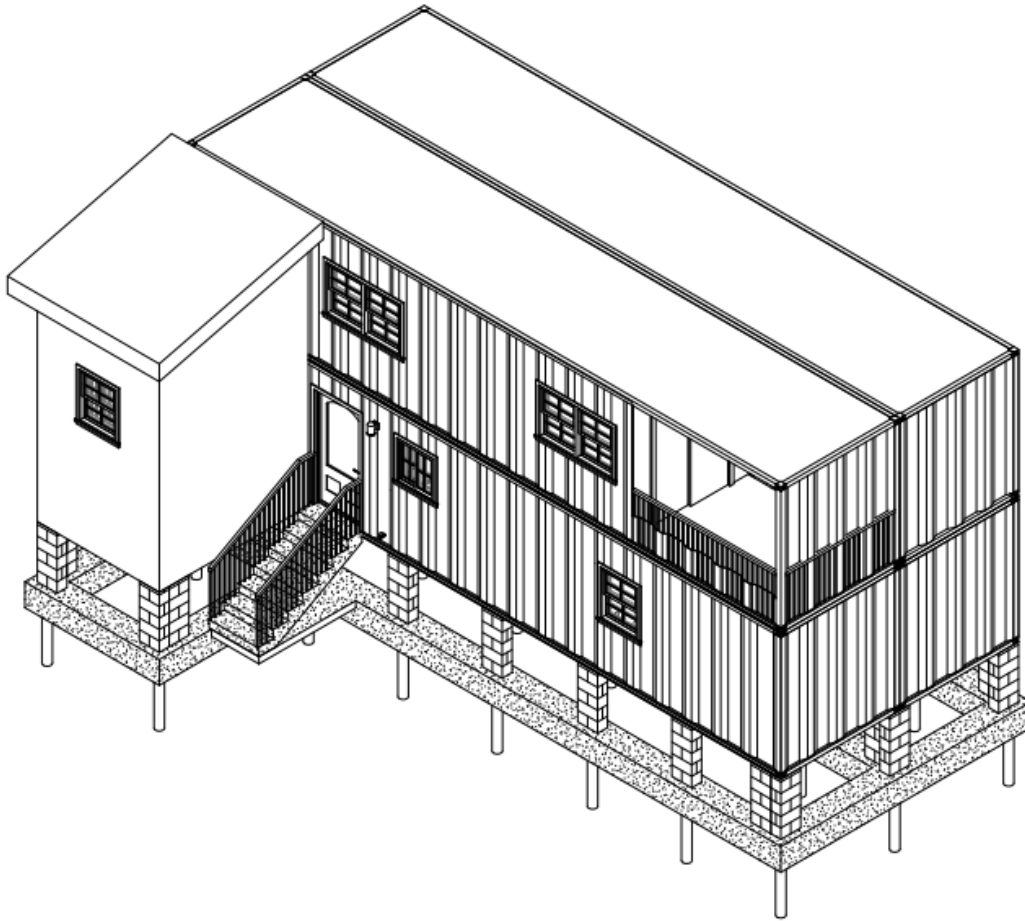
STICK FRAMED (COMPARED TO SAME
SF)

LA = \$195K (~\$134.96/SF)



QUICK FACTS

- RECYCLING
 - Repurpose containers
 - Cut metal reusable
- 170 MPH WIND RESISTANCE
- TYPICAL SPRAY R-13 INSULATION



THANK YOU

**Nola Container
Development LLC**

504.435.7423



MIEAUX
REAL ESTATE & DRAFTING SERVICES

**VINCENT
BROTHERS
CONSTRUCTION**